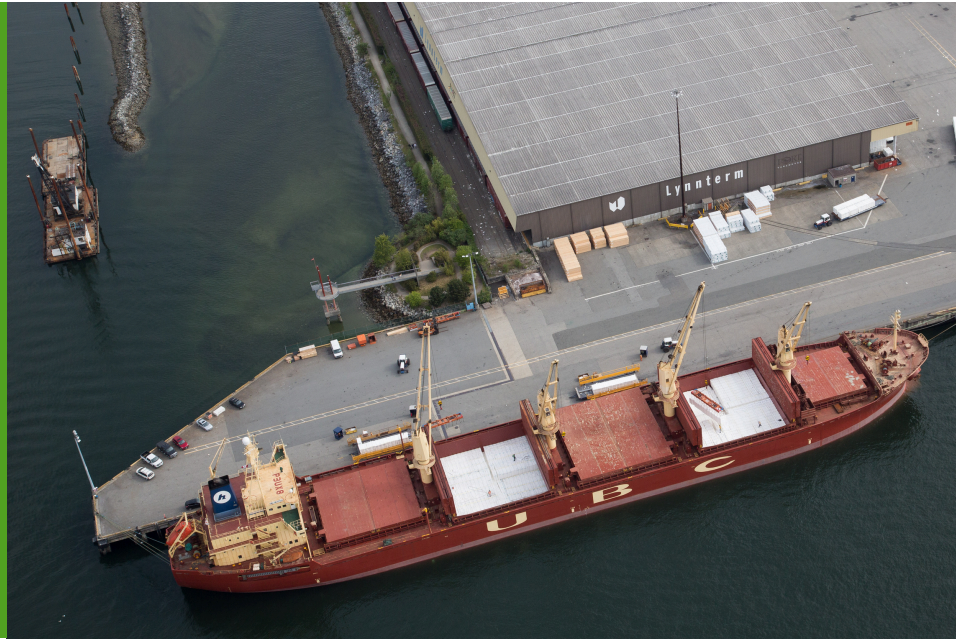




Lynnterm

Lynnterm is a critical strategic hub for break-bulk imports and exports in Canada's Pacific Gateway.



95 acre, deep-sea facility specializing in the handling & storage of forest products, steel, project and other general cargo



4 berths:

- Berth 1: 235 m long, controlling depth 12.5m
- Berth 2: 240 m long, controlling depth 14.9m
- Berth 3: 240 m long, controlling depth 14.5m
- Berth 4: 200 m long, controlling depth 11.9m



8 warehouses with over 800,000 sq. ft of coverage



Warehouses are serviced by 8 km of rail track that connect to the main railways servicing the Lower Mainland



Trans Canada Highway #1 is minutes away, providing fast turnaround time



On-site maintenance for service & repair of all equipment with on-site gear locker



604-904-2800



15 Mountain Highway
North Vancouver, BC



www.ssamarine.ca